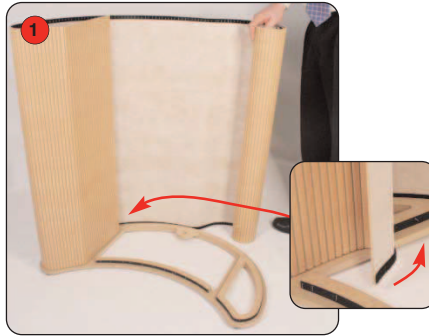


# Assembly Instructions

## Crescent assembly



Kit includes: Top, base and MDF tambour wrap (Optional internal shelf and poles shown)



1 Lay the base on the floor, hook fastener side uppermost. Attach the tambour wrap to the base.



2 Continue to attach the wrap. At this stage you may decide to have the unit open or closed at the back.



3 Place the top onto the wrap and secure using the hook fastener.

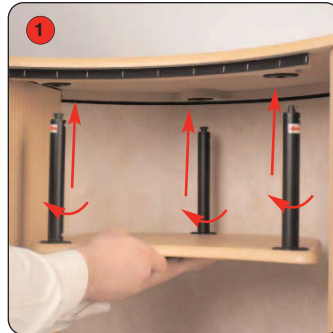


Completed Crescent workstation.

## Optional Internal shelf assembly



1 Locate the twist and lock poles into the internal shelf. Ensure the arrows on the poles are all facing the same direction.



1 Locate the poles/shelf into fittings underneath the Crescent top. Rotate each pole in the arrow direction to lock the shelf in place.



Completed Internal shelf.

