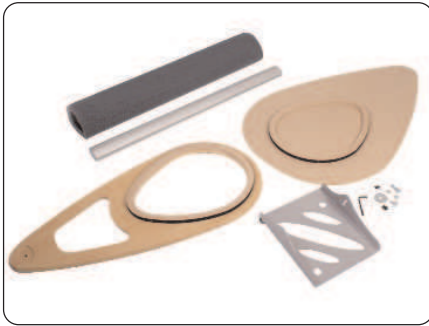
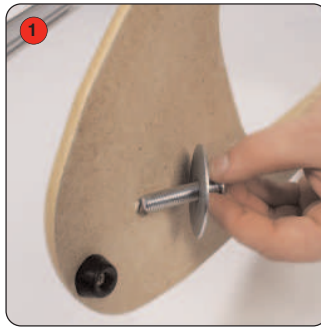


# Assembly Instructions

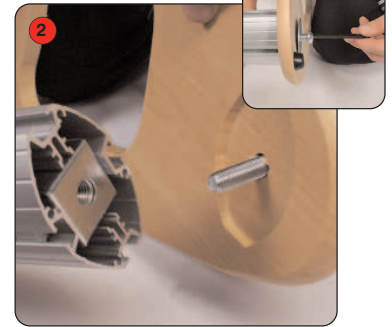
## Comet assembly



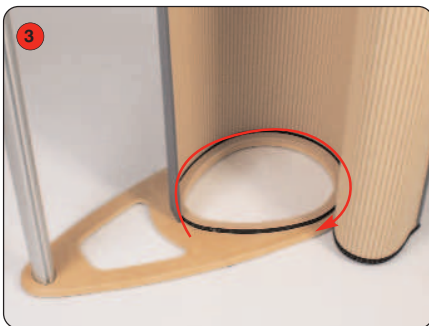
Kit includes: Base, top, wrap, linear post, aluminium lit holder, fixings, and allen key.



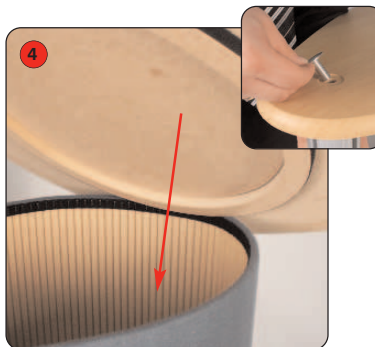
Take the base, turn on its side and slot the screw and washer through the hole on the underneath near the narrow end.



Feed the screw into the bottom of the linear post and screw tightly to secure, using the Allen key.



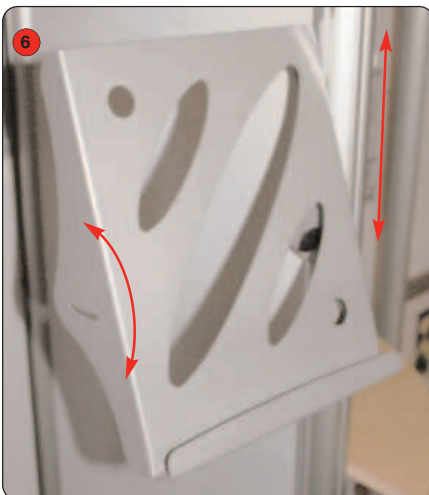
Stand the base and post up now and attach the wrap around the hook and loop mount on the base, pressing firmly to secure.



Lower top onto the wrap and again, press firmly to secure the hook and loop fastening together. Secure in place by inserting and tightening screw at top of post.



The linear post should have the bar and thumbscrews already attached. Unscrew the thumbscrews, and insert through the side of the literature holder, screwing back into the bar to secure



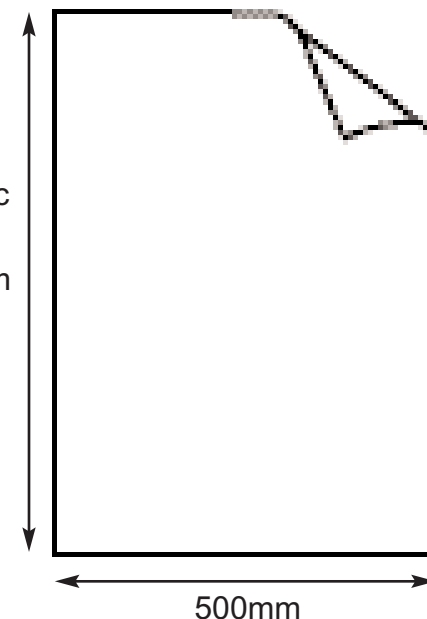
The height and angle of the literature holder can be adjusted by loosening the thumbscrews.





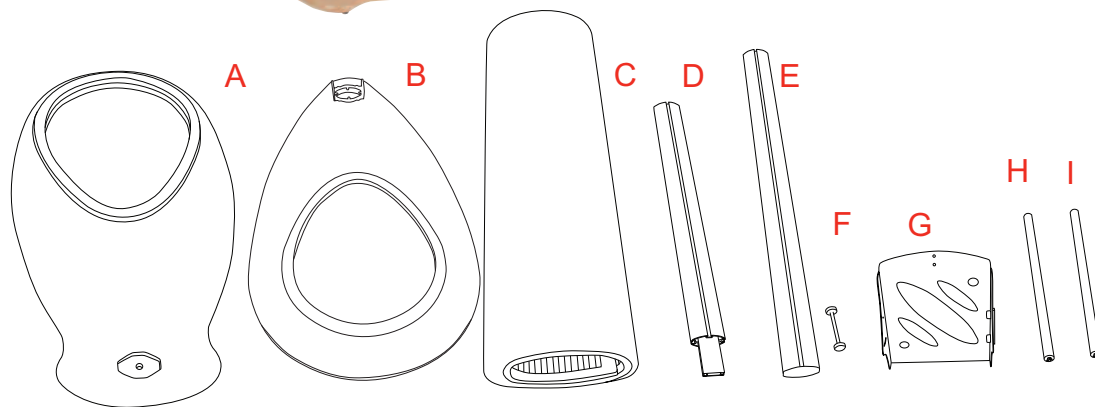
For full graphic spec  
please refer to graphic  
template

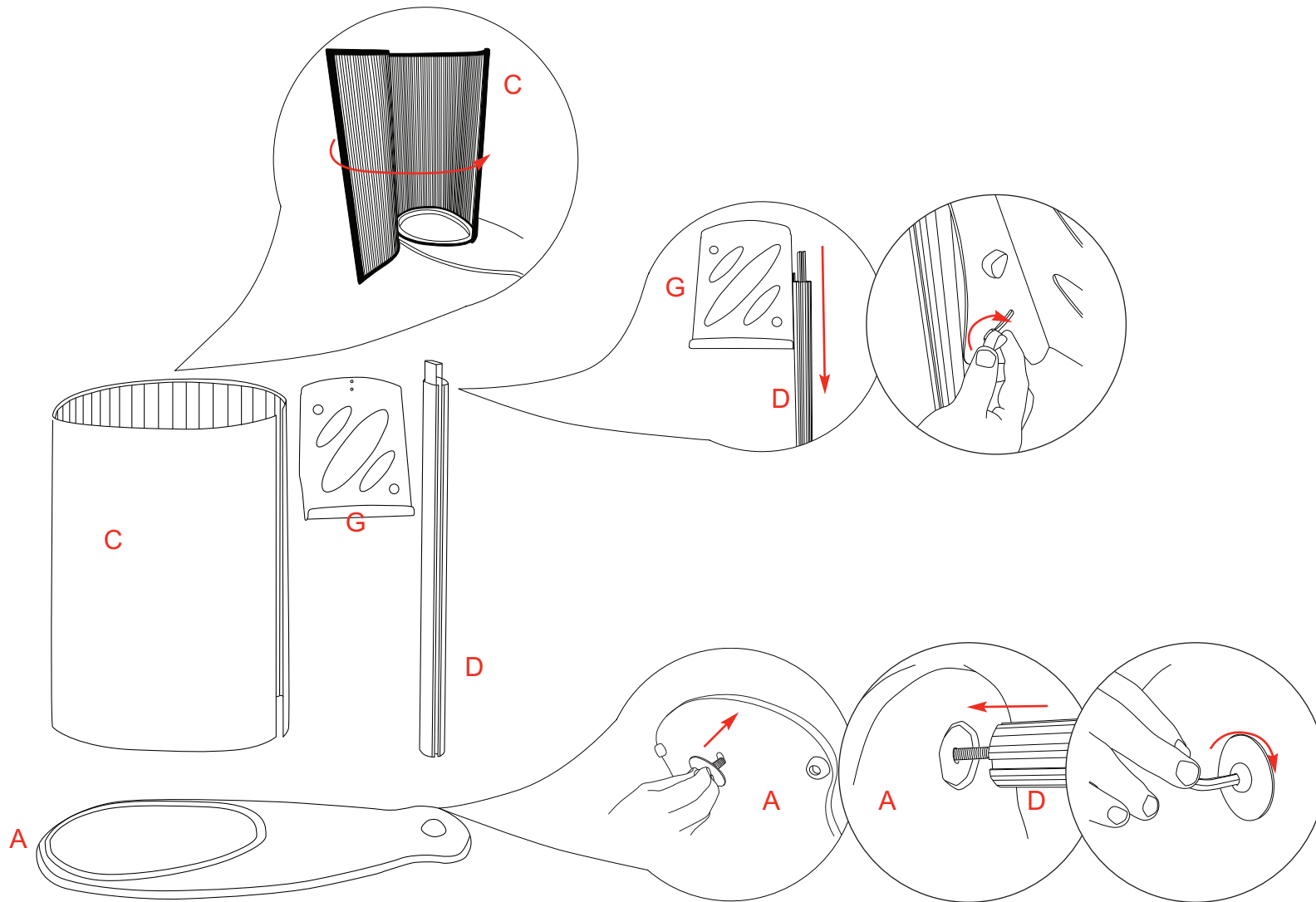
1500mm

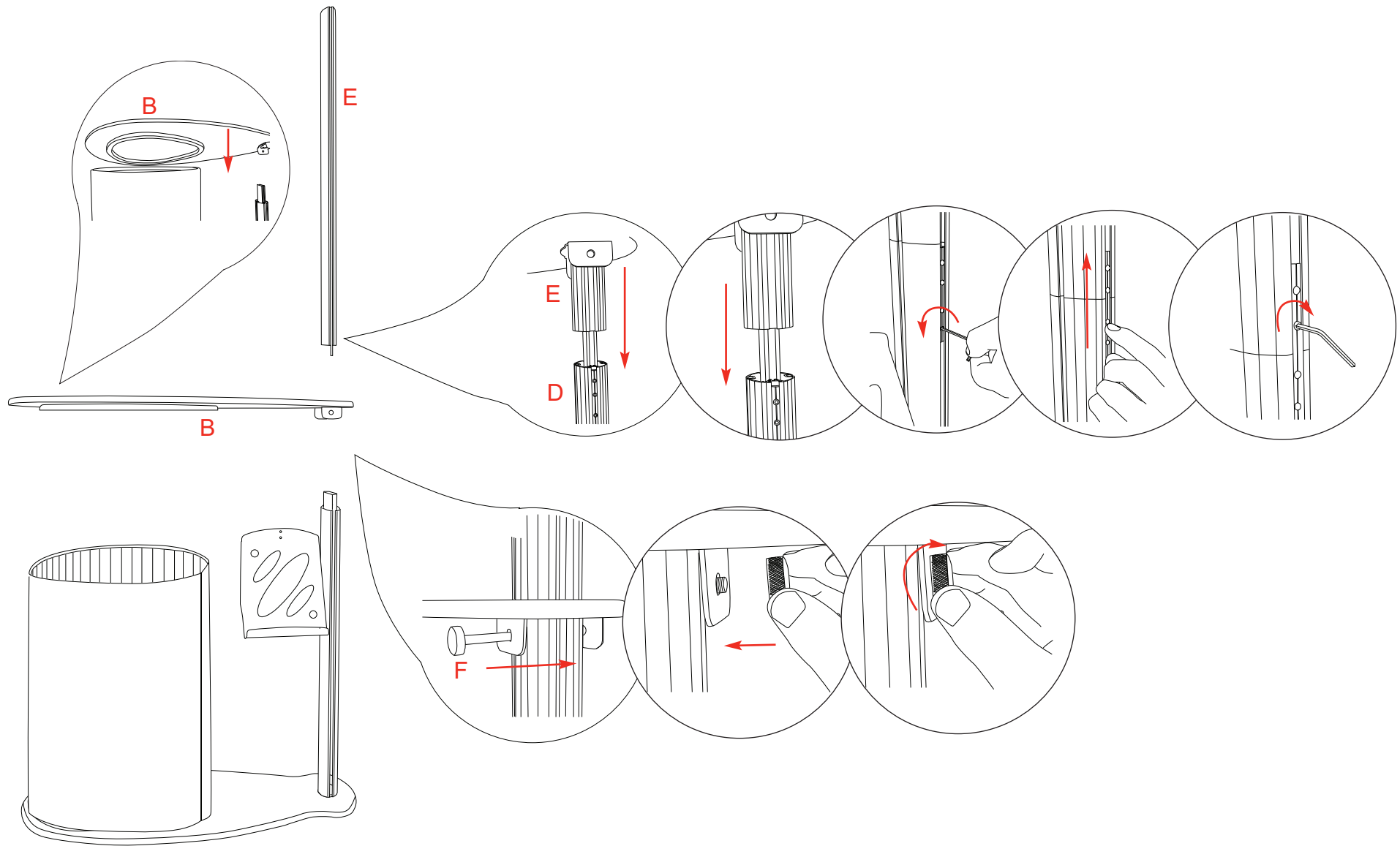


500mm

**Please note:** Allow 15mm  
both sides and 100mm  
bleed top and bottom.







We are continually improving and modifying our product range and reserve the right to vary the specifications without prior notice. All dimensions and weights quoted are approximate and we accept no responsibility for variance. E&OE.

