

Assembly Instructions



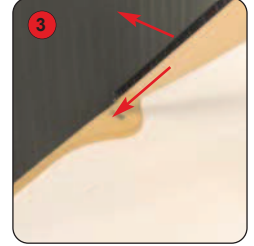
Kit includes: Top, tambour wrap, front 'fin' and base



1 Place the base on the floor with the ridging uppermost. Attach the tambour to the base.



2 Make sure that the hook fastener on both the tambour and base fit securely together.



3 Slot the narrow end of the 'fin' into the hole on the front of the base.



4 Push the side of the 'fin' against the tambour wrap to secure the fit.



5 Place the top onto the tambour wrap and secure using the hook fastener.



6 It may be necessary to open some of the wrap to fit the top onto the hook fastener.



Other products in our Physique range include:



Double D

Multi-function popular style workstation.



Single D

Designed to add useful counter space to any display.



Urban

Complete with clear acrylic display shelf.